

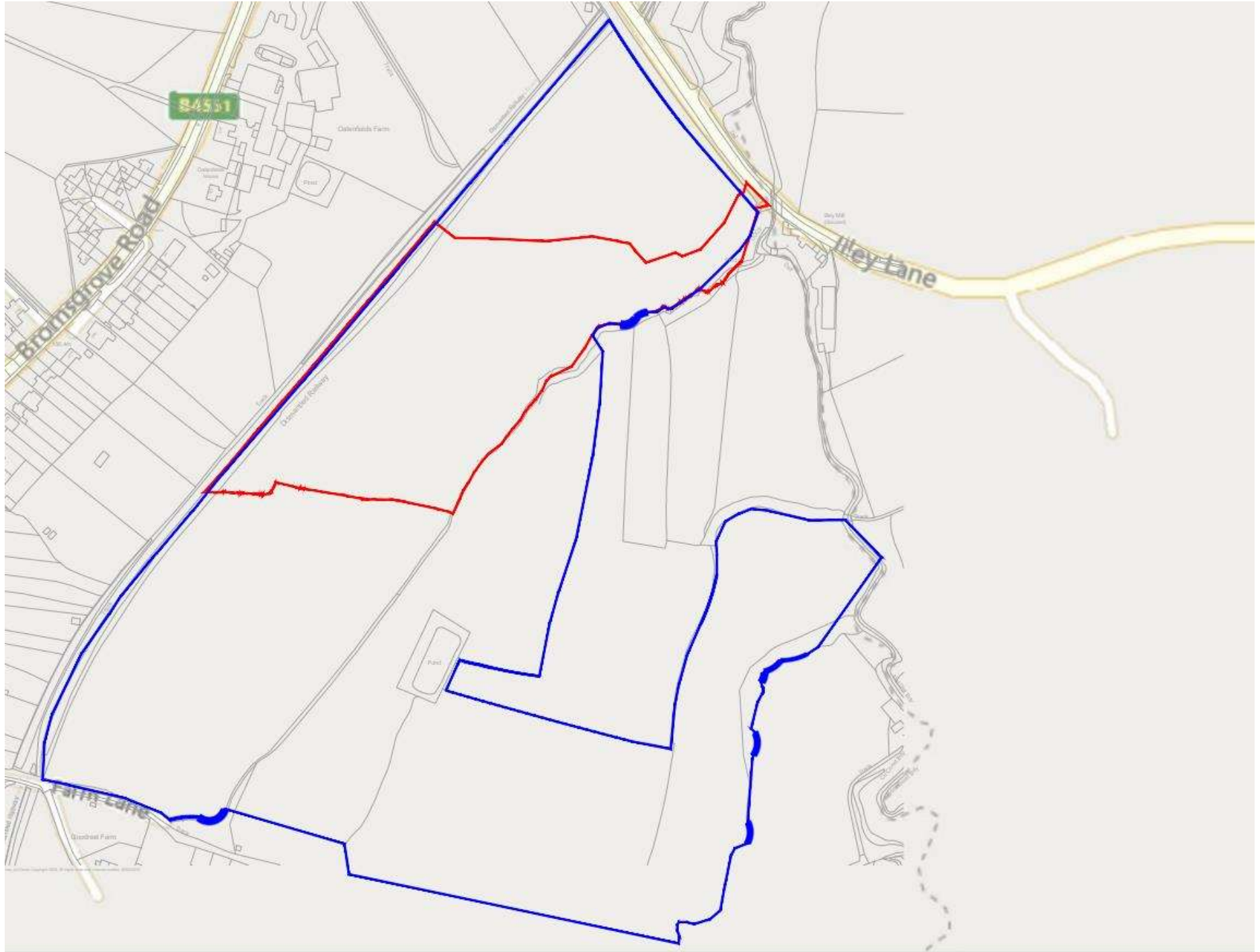
24/00960/FUL

Land Off Illey Lane, Hunnington, Halesowen

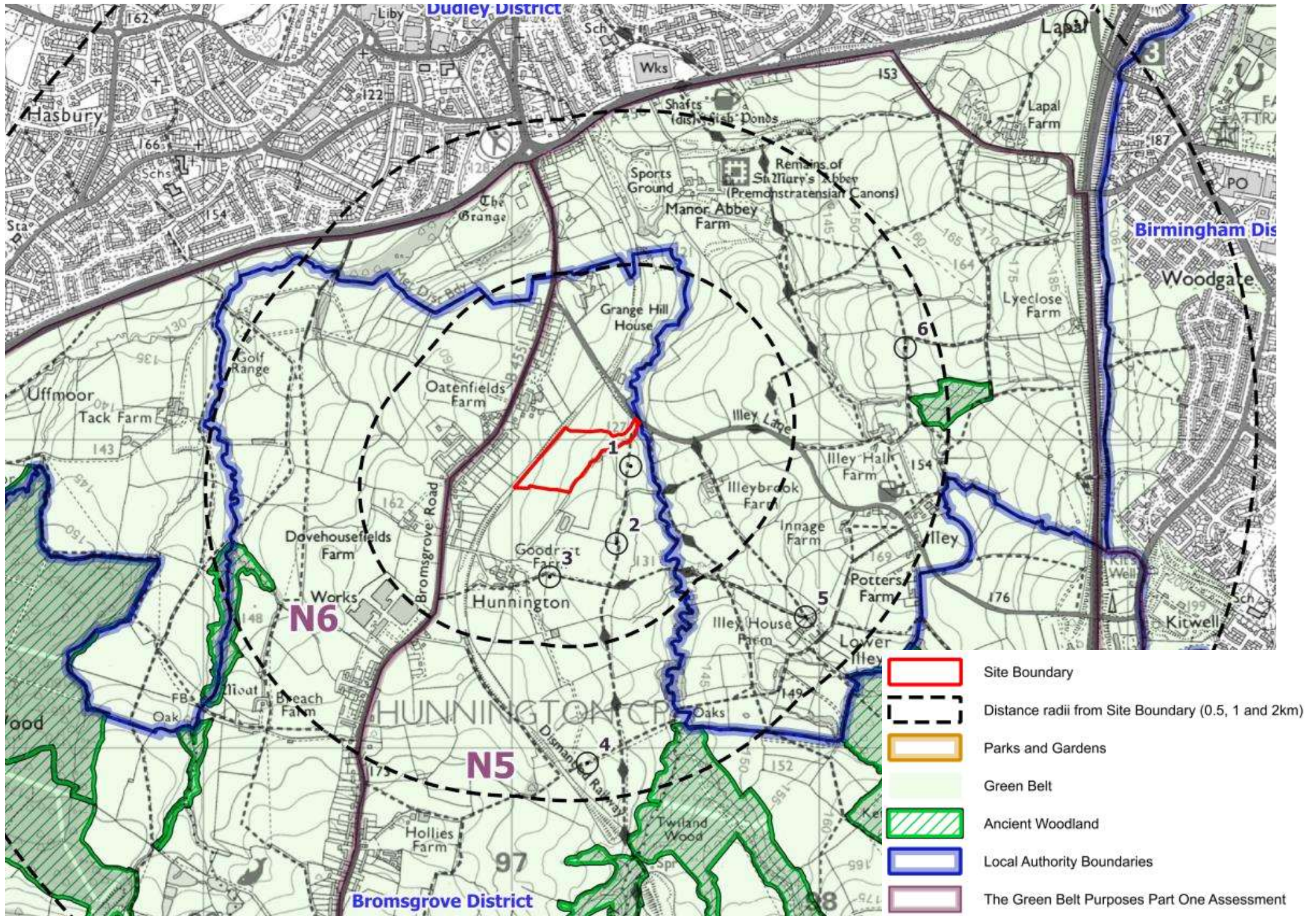
Proposed Battery Energy Storage System (BESS) and
associated infrastructure

Recommendation: GRANT planning permission subject
to conditions

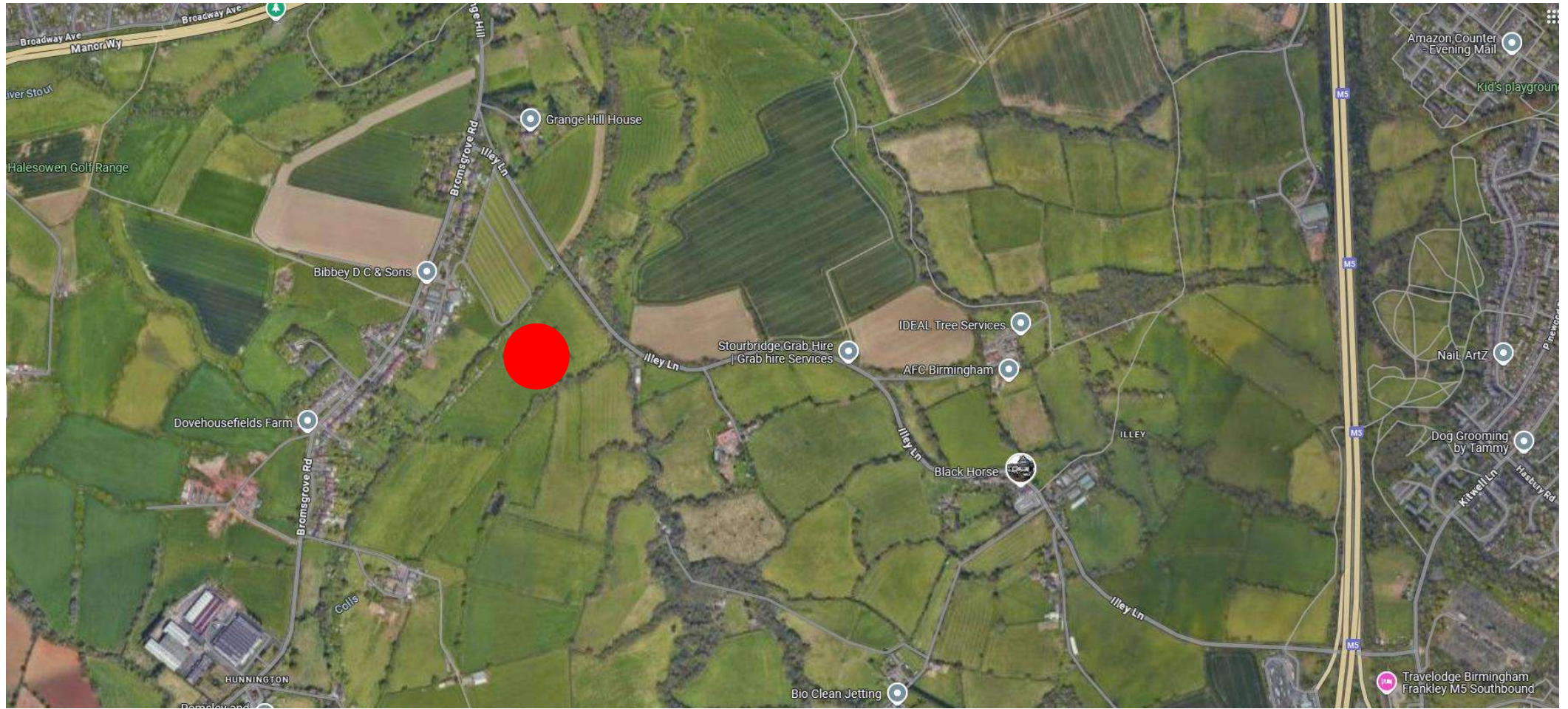
Site Location Plan



Site Context Plan



Aerial View



Existing Layout



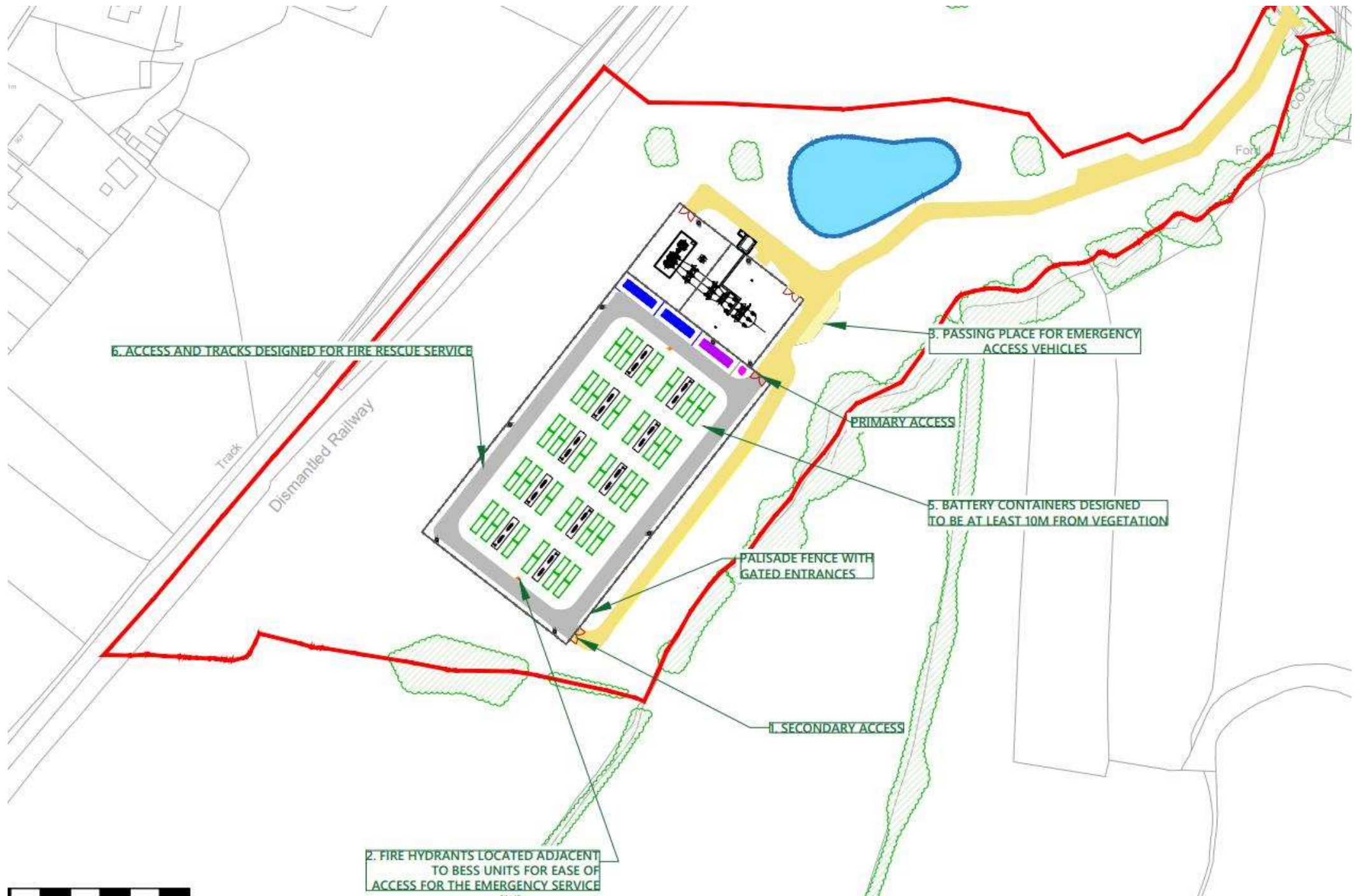
Proposed Layout



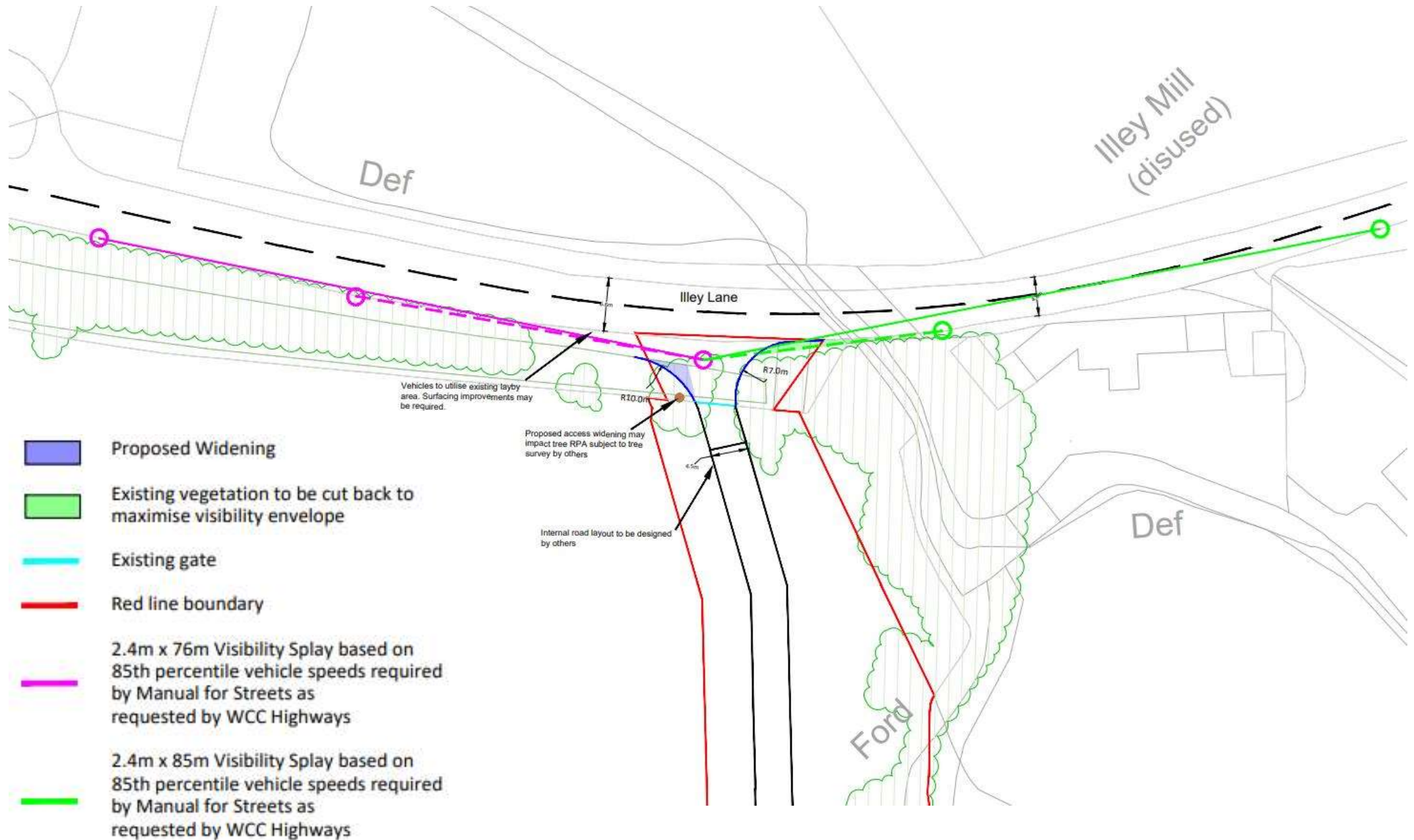
Landscaping Plan



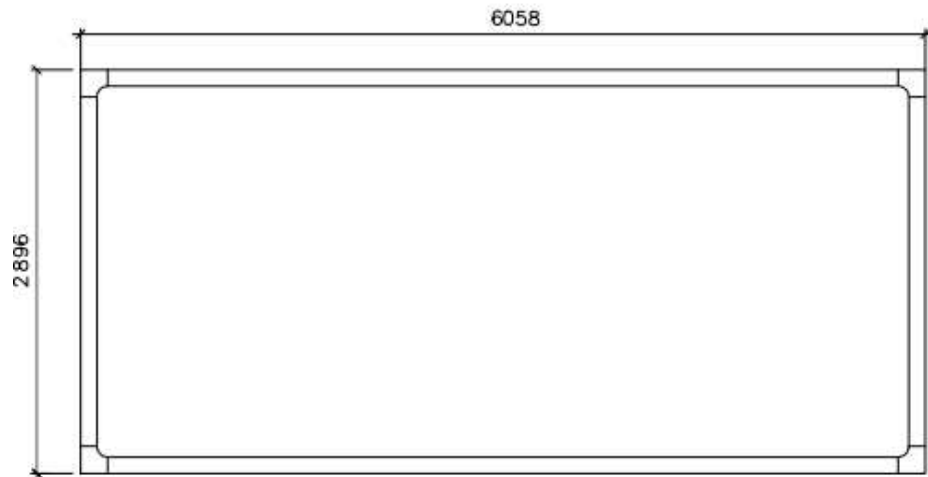
Fire Safety Plan



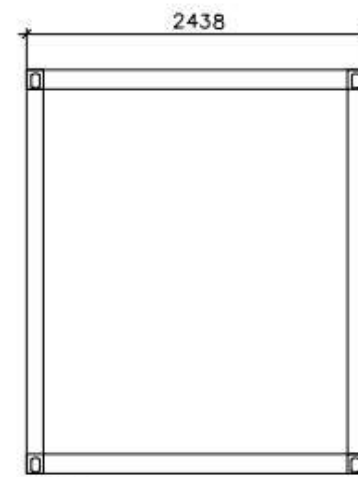
Proposed Access Plan



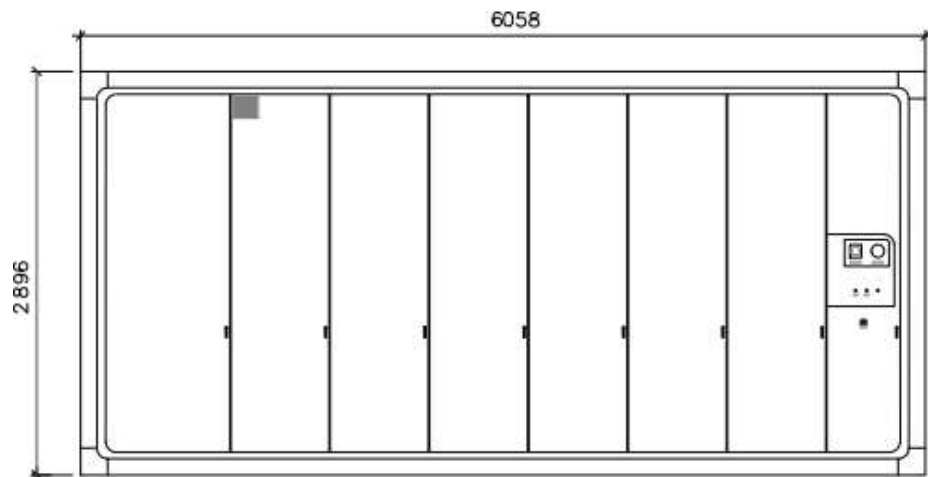
Proposed Battery Unit



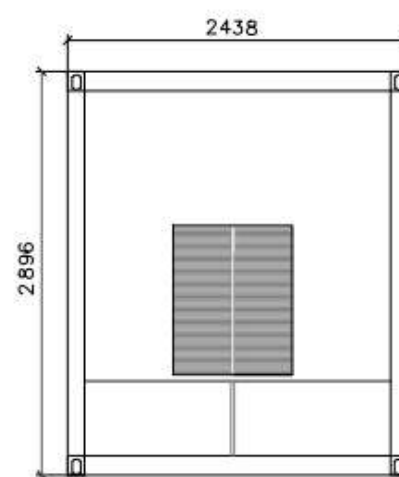
SIDE VIEW



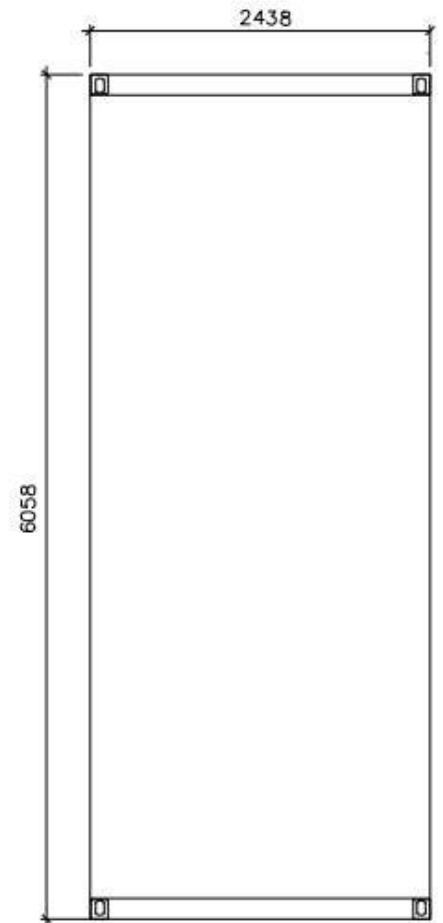
END VIEW



SIDE VIEW



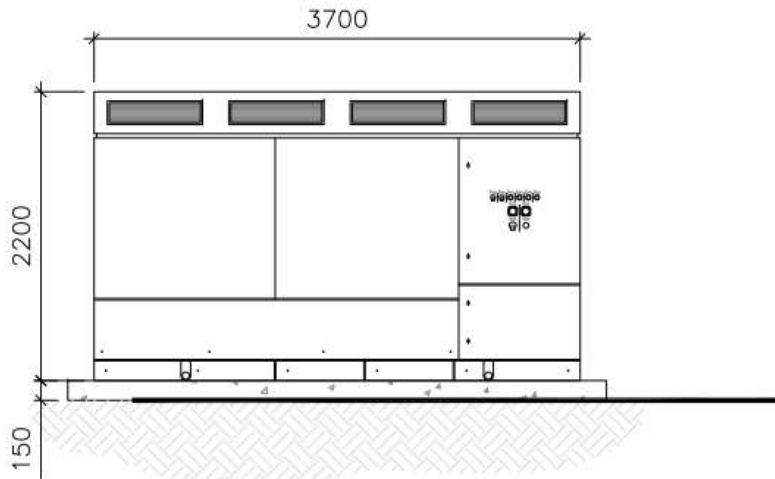
END VIEW



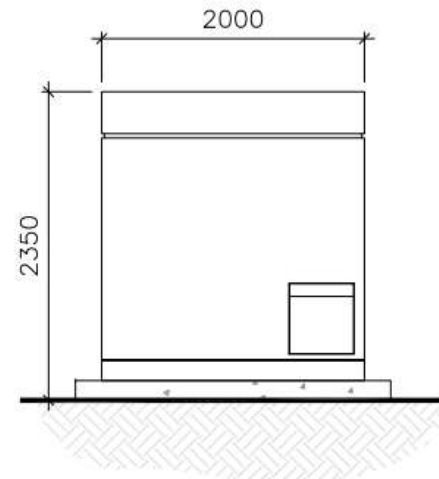
PLAN VIEW

NOTES:-
CONTAINERS OVER 4 CONCRETE CUBES IN EACH OF THE CORNERS
Dimensions: 0.50 x 0.50 x 0.80 cm

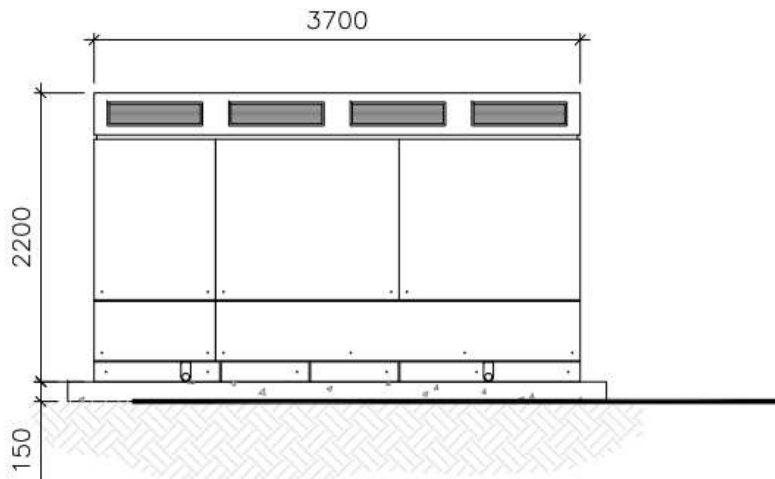
Proposed Inverter



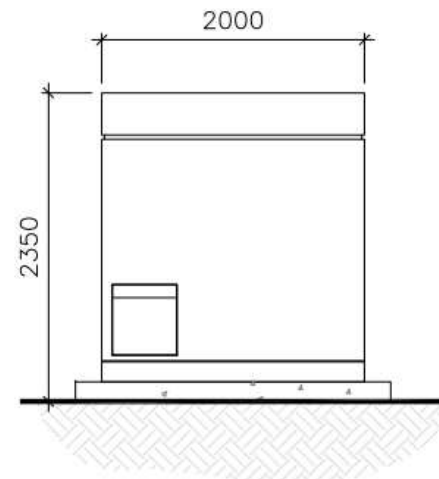
SIDE VIEW



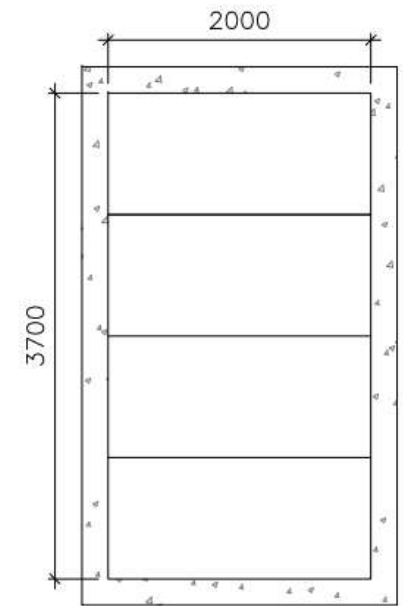
END VIEW



SIDE VIEW

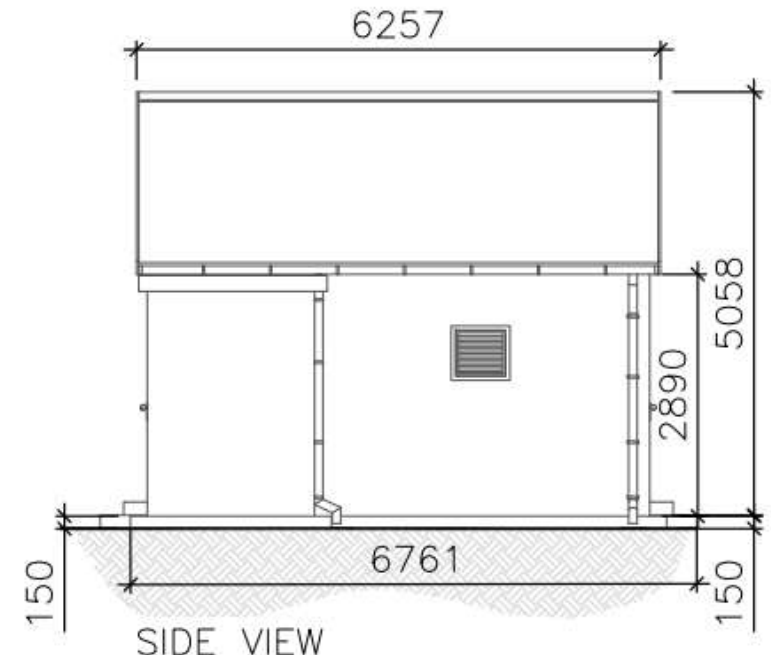
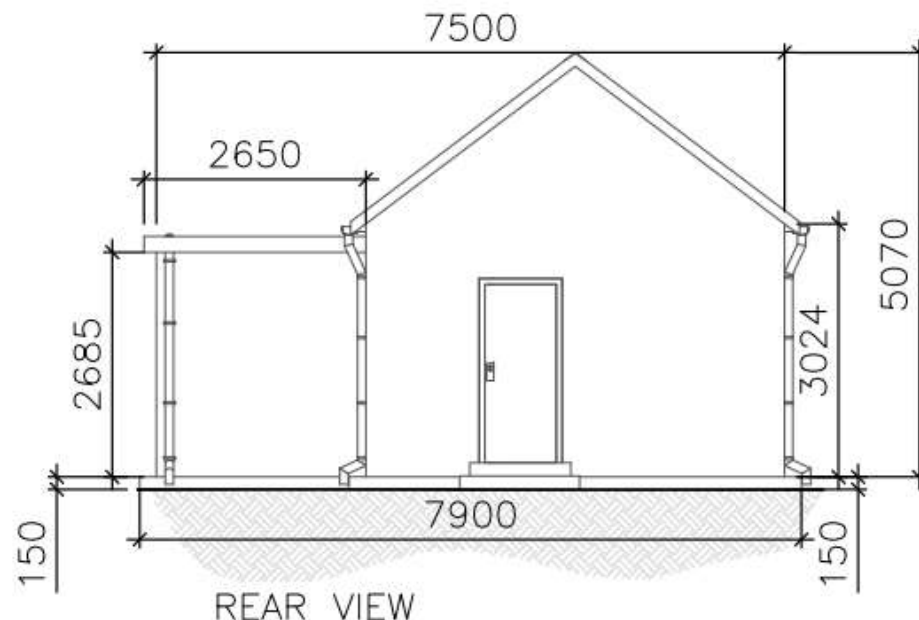
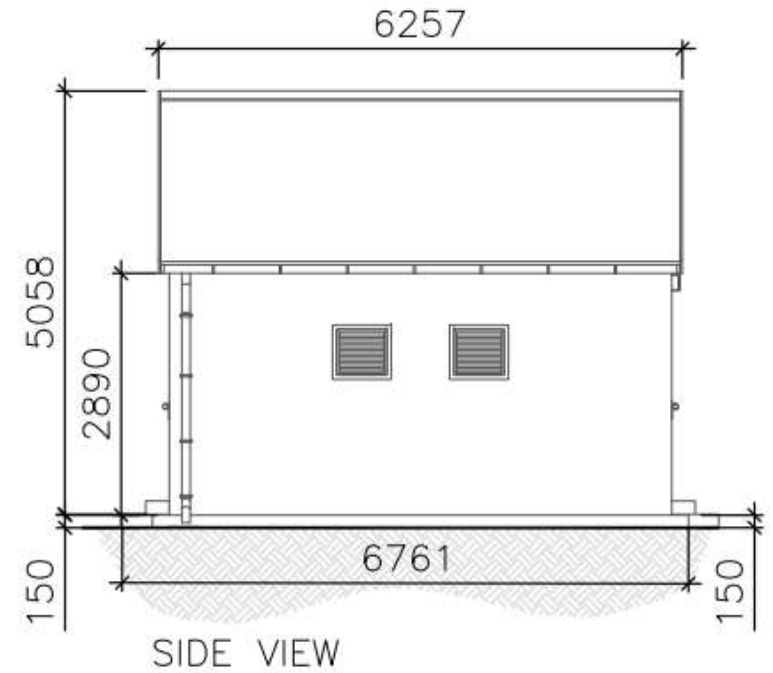
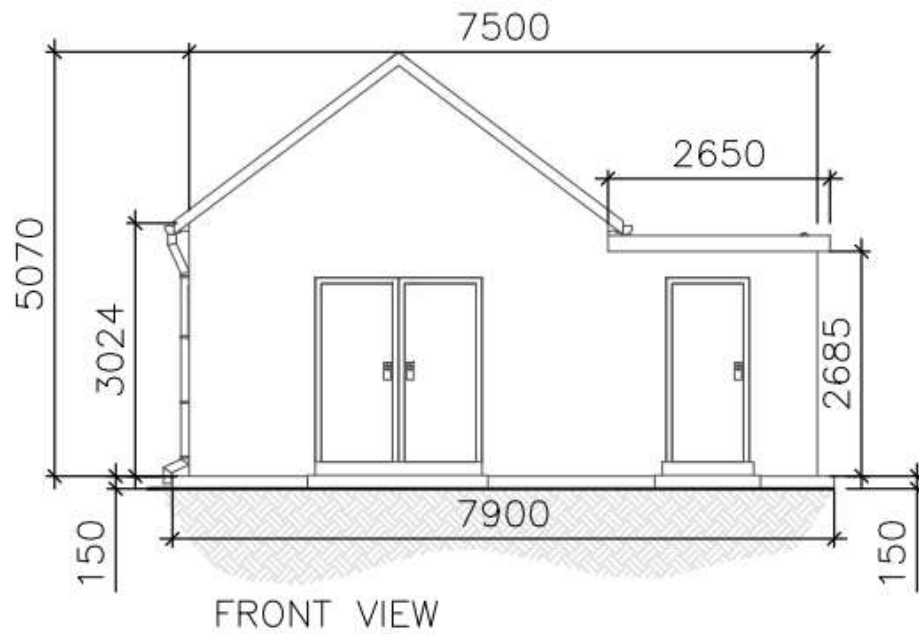


END VIEW

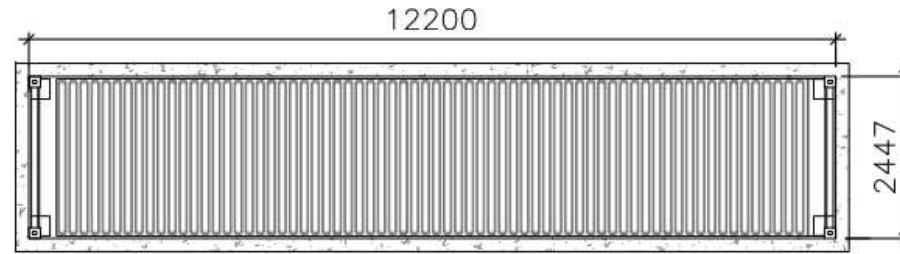


PLAN VIEW

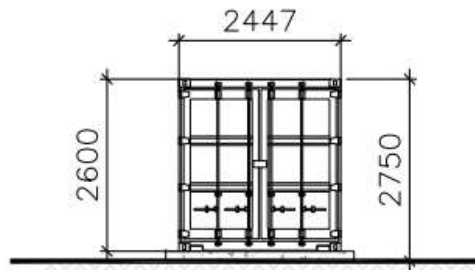
Proposed DNO Control Room



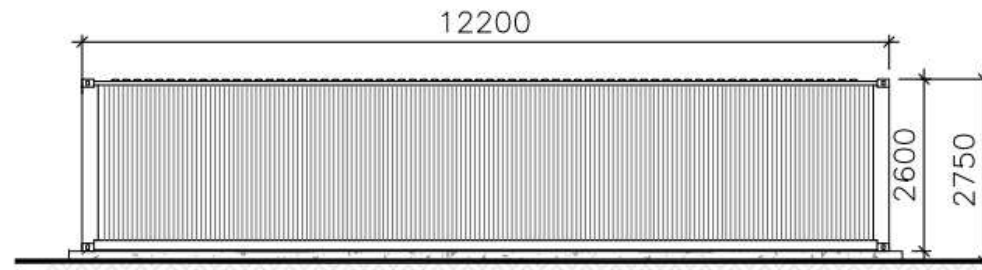
Proposed Monitoring Room/Office



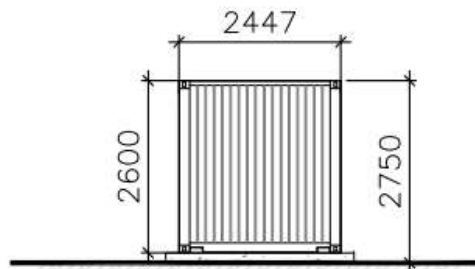
PLAN VIEW



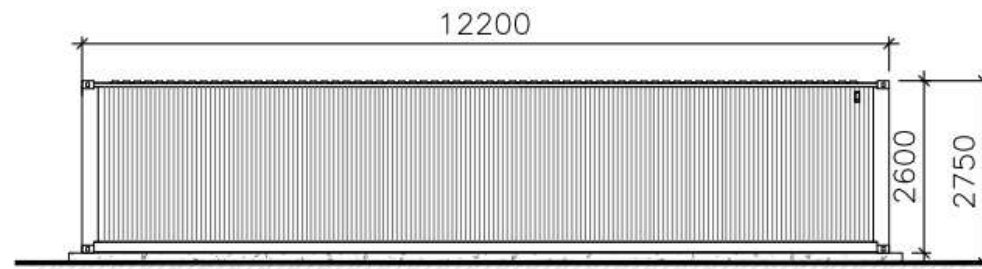
END VIEW



REAR VIEW

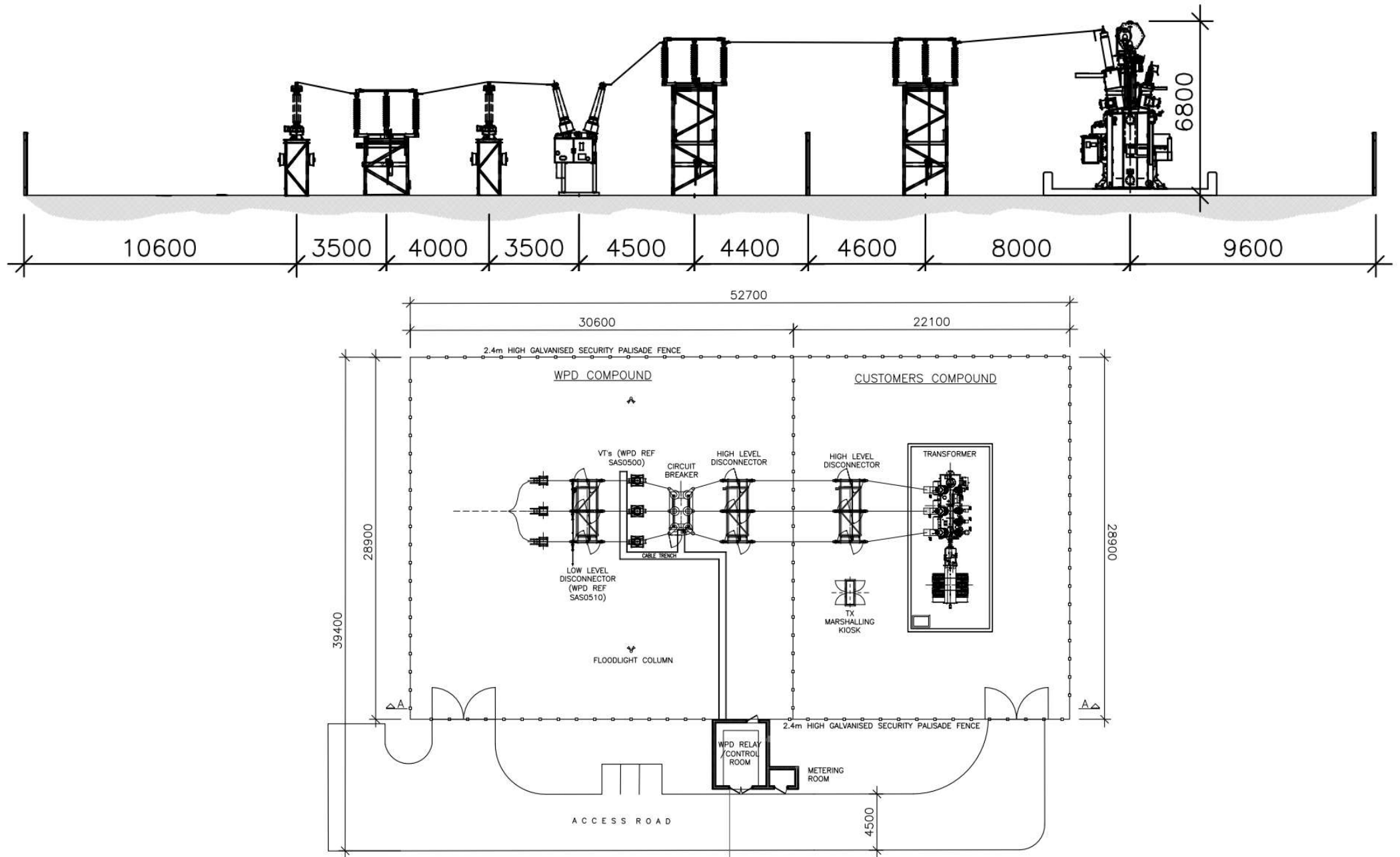


END VIEW

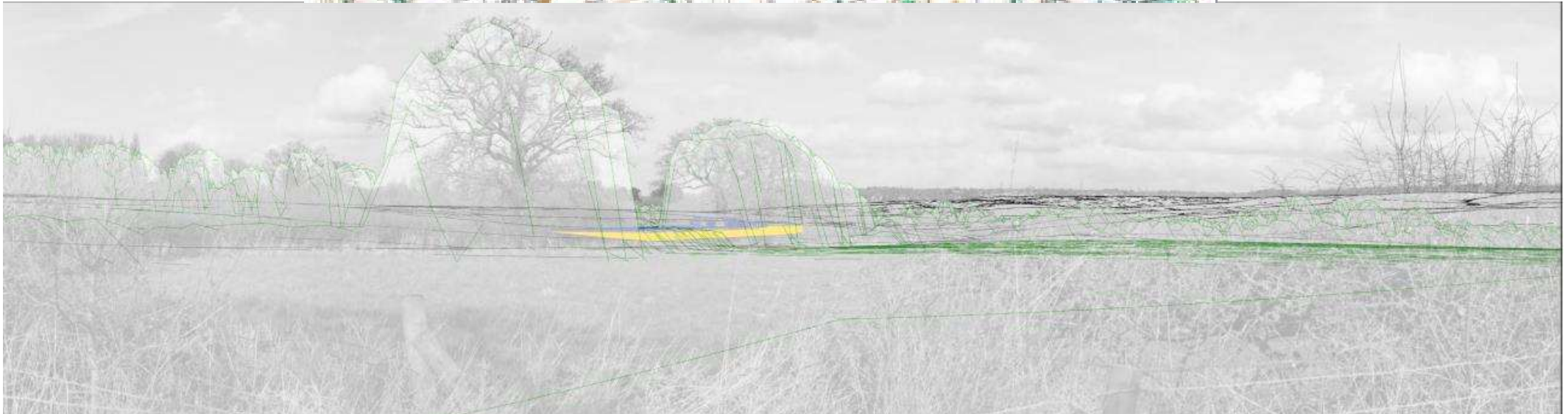


FRONT VIEW

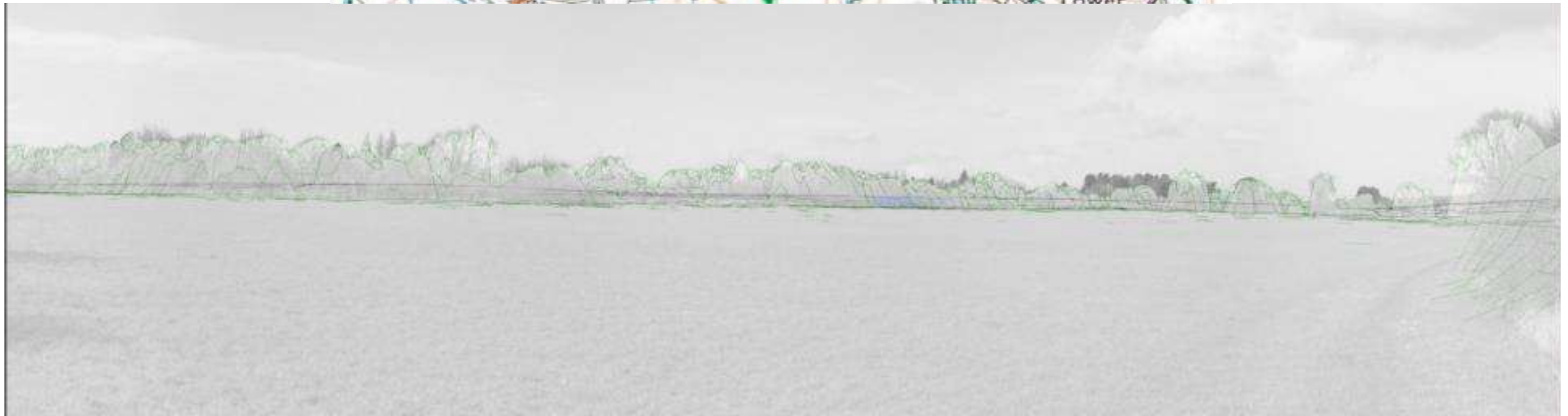
Proposed 132kV Substation



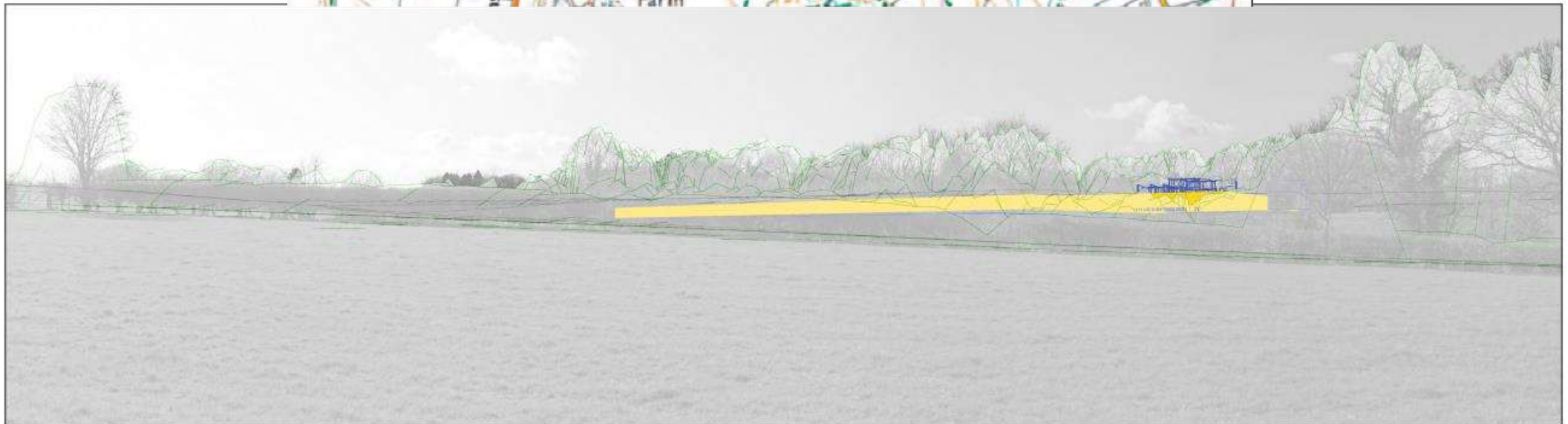
Existing and Photowireline View from PROW Goodrest



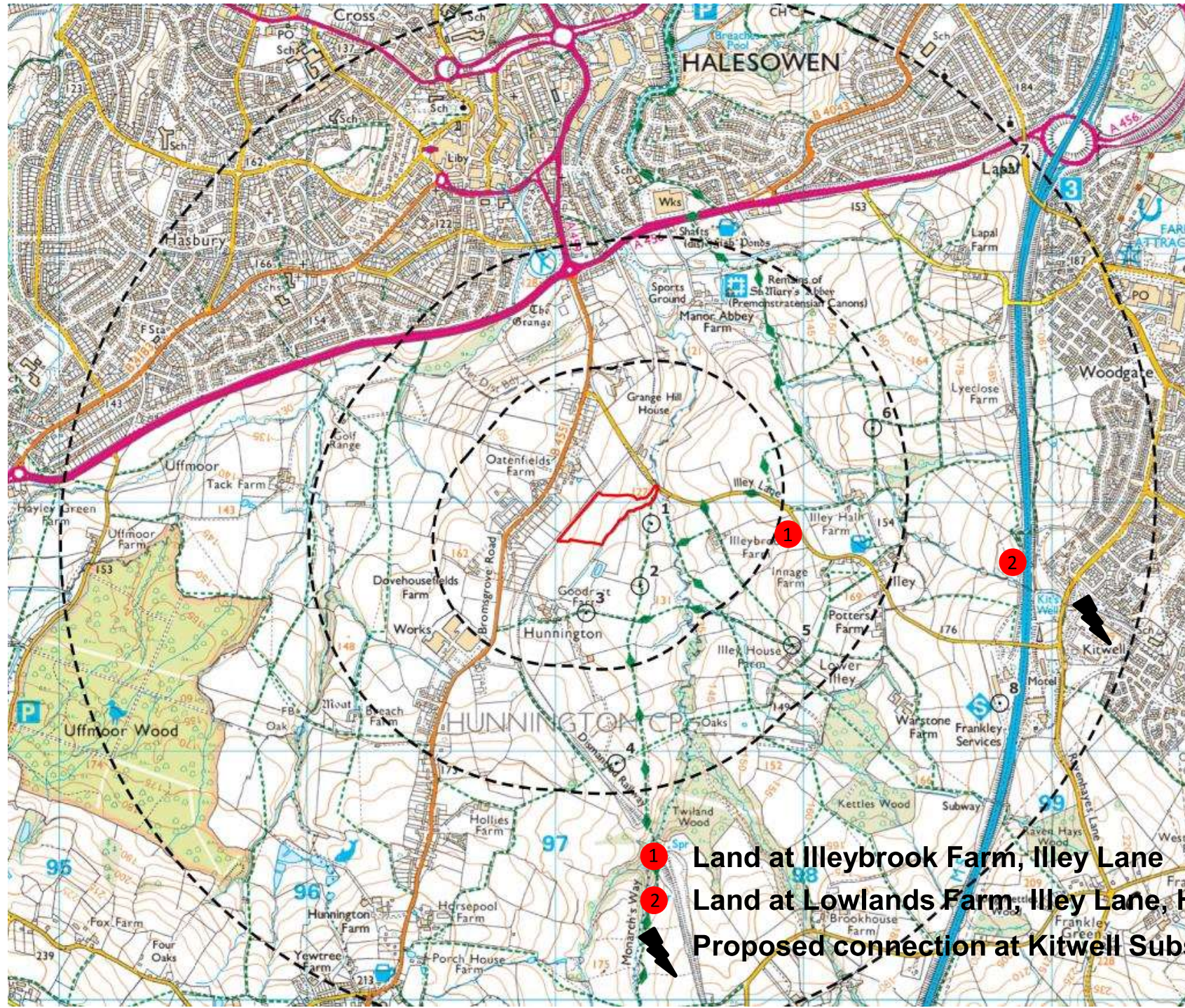
Existing and Photowireline View from PROW



Existing and Photowireline View from PROW Telepole near Illey Mill



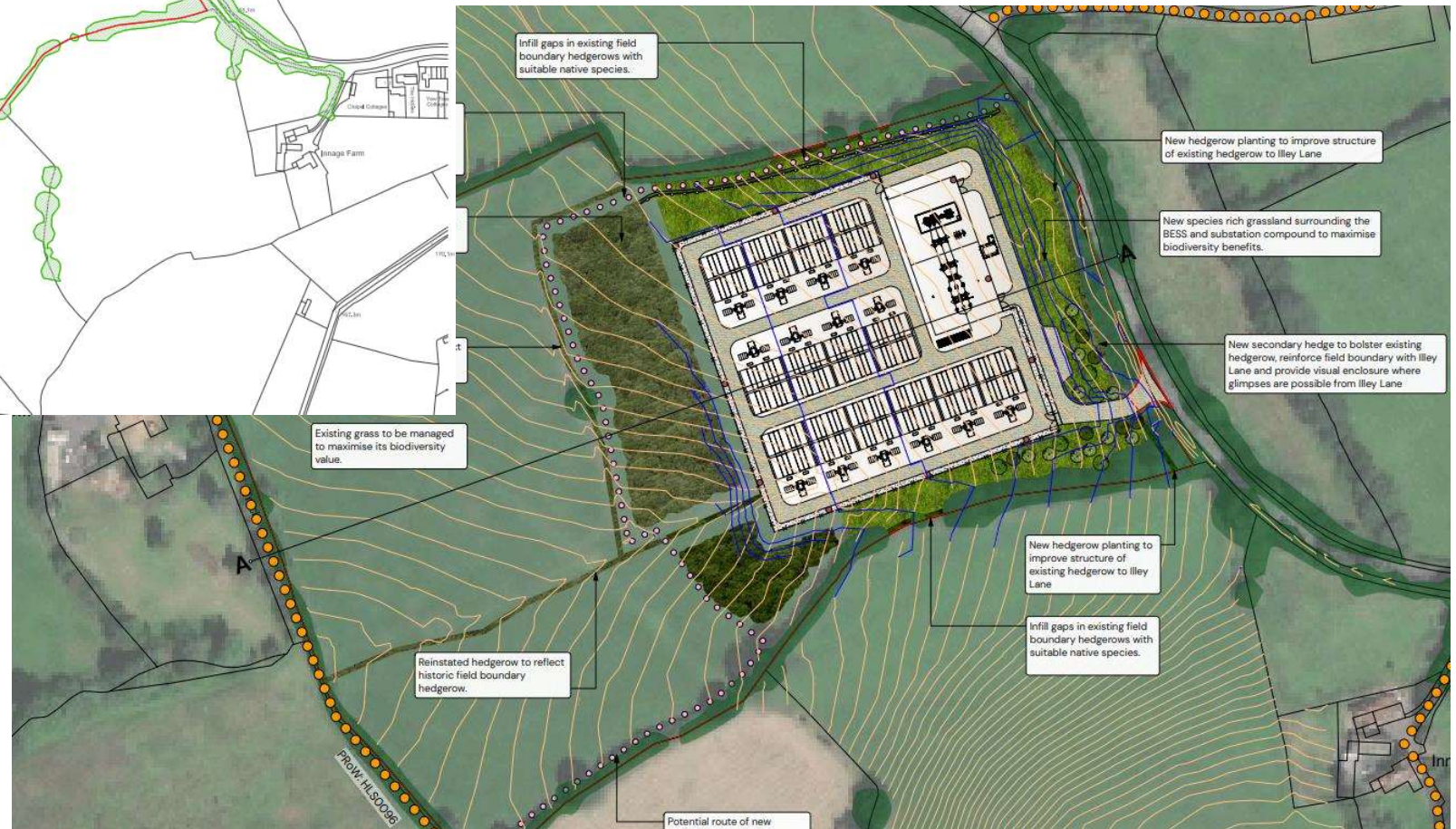
Other Approved Schemes



- ① Land at Illeybrook Farm, Illey Lane
- ② Land at Lowlands Farm, Illey Lane, Halesowen
- ⚡ Proposed connection at Kitwell Substation

Other Approved Schemes Proposed Layouts

1. Land at Illeybrook Farm, Illev Lane



Other Approved Schemes Proposed Layouts

2. Land at Lowlands Farm, Illey Lane, Halesowen

